

SOKKIA

Archer²

Ruggedized Field Controller



- **Large Sunlight-Readable Display**
- **MIL-STD 810G and IP68 Certified**
- **1 GHz Processor**
- **5 MP Camera**
- **3.5G Cellular Module (optional)**
- **Internal GPS 2-5 m Accuracy**

Ruggedized Field Controller

Archer2 Field Controller

The Sokkia Archer2 field controller is designed for the construction, mapping and survey professional operating MAGNET® or Pocket 3D software and works with all Sokkia GPS receivers and total stations. An optional 3.5G cellular modem provides access to MAGNET Enterprise for sending and receiving data files and staying connected.

The Archer2 includes a capacitive touch screen, similar to many of the smartphones used every day. The display surface is also extremely scratch-resistant, and much more pierce-resistant to sharp objects as compared with other resistive displays.

With the Archer2's internal "intelligent" batteries, there is no worry of ever overcharging. Typical battery life is tested to 20 hours with excellent performance under extreme conditions. Recharging is fast and comes to a 50 percent charge in as little as an hour.

The Archer2's external ports are located at the base of the unit: USB Host, USB client micro, power, and audio. The USB Host A is easily used in the field where you can quickly copy a large job, coordinate or DXF files to the Archer2. The DB9 serial port is perfect for older total stations that still require a cable.

Sunlight Readable Display

The Archer2 features a 4.3 inch display designed for viewing in direct sunlight. The display uses a one-touch interface that is optically bonded to increase visibility.



Built to Survive

In addition to IP68 certification, which protects against dust and is waterproof up to one meter, the Archer2 is independently certified to MIL-STD 810G standard, and can operate in temperatures ranging from -22°F to 140°F.



Fast 1GHz processor

Windows Mobile® 6.5 provides a modern operating environment and added expandability with other software applications. The 1 GHz processor drives any Sokkia field application software with ease.



Built-in 5 MP camera

A 5 MP auto focus camera with LED flash comes as standard equipment. Store hundreds of photos on the built-in 8GB's of flash storage, and easily transfer them to a computer or USB stick.



Cellular Modem (optional)

The optional internal cellular modem is capable of data communicating with MAGNET products to send and receive data to the cloud, making it easy to communicate with field crews when projects need to be changed.





Large 4.3 inch
Sunlight-Readable Display

1 GHz Processor
512MB RAM
8GB Flash Storage

MIL-STD 810G
IP68 Certified

USB Host (Full Type A)
USB Client (Micro Port)
9-pin Serial Port

3.5G Cellular Module (optional)
Internal GPS

Built-in Bluetooth®
Wi-Fi Connectivity

Built-in 5 MP Camera



The Perfect Solution

The Archer2 running MAGNET® software matched with either the GCX2 or GRX2 GNSS receivers provide the lightest GNSS RTK rover solutions with efficient workflow.

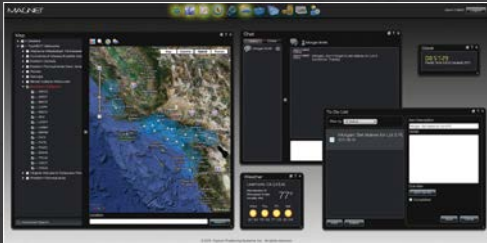


Software

MAGNET® software is tailored for use with Sokkia field controllers in both field and office environments.

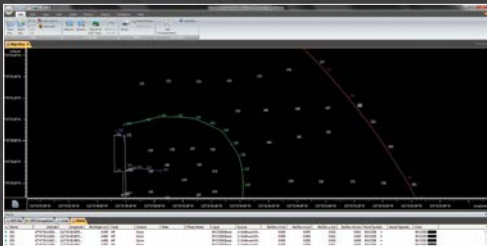
MAGNET® Enterprise

A managers dream of tracking all field and office data in one simple-to-access web interface. Store and exchange your field data in the MAGNET Enterprise cloud. Save the drive time by sending your field and office updates to the cloud rather than driving back to the office.



MAGNET® Office

Full CAD functionality with MAGNET Office Site and Topo. Or field data-processing with MAGNET Office Tools inside AutoCAD® products, like Civil3D®. The MAGNET Office solution has what you need. Pick the module that fits your needs.



MAGNET® Field

Powerful on-board software that covers full functions for surveying and engineering tasks. MAGNET Field handles data collection, stake out, roads and coordinate geometry.



SOKKIA

SOKKIA CORPORATION

16900 W. 118th Terrace Olathe, KS 66061
(800) 4-SOKKIA
www.sokkia.com

Specifications subject to change without notice
©2015 Topcon Corporation All rights reserved.
SOK-1031 Rev A 3/15

Archer2

RUGGEDIZED FIELD CONTROLLER

SPECIFICATIONS

Hardware	
Processor	1 GHz ARM Cortex A8 i.MX53
Operating System	Microsoft® Windows Embedded Handheld 6.5
Memory and Data Storage	512MB RAM 8GB flash storage User accessible Micro-USB
Camera (Geo, Geo 3G)	5 MP resolution with autofocus and LED Flash with video capture
Power	12/24VDC power input jack Intelligent Li-Ion battery 3.6VDC at 10600mAh
Communication	
Ports	COM1 RS-232C 9-pin D Connector with 5VDC power on ring indicator USB Host (Full A) USB Client (Micro)
Wireless Connectivity	Bluetooth® Wi-Fi 802.11b/g/n
Cellular Connectivity (Geo 3G only)	Integrated Worldwide 800/850/900/1800/1900/2100 MHz UMTS/HSPA+

Kit Components

- Battery and charger
- International plug kit
- USB cable
- Quick start guide
- Hand strap
- Screwdriver
- Stylus



- Bluetooth® word mark and logos are registered trademarks owned by Bluetooth SIG, Inc. and any use of such marks by Sokkia is under license.
Other trademarks and trade names are those of their respective owners.
- Designs and specifications are subject to change without notice.
- Product colors in this brochure may vary slightly from those of the actual products owing to limitations of the printing process.

Your local Authorized Dealer is: