

SOKKIA

GSR2700 RS

and GSR Reference Station Software

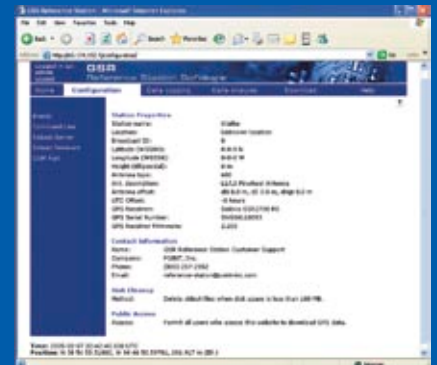


GSR2700 RS Features

- State-of-the-art, high-precision, dual-frequency GPS receiver
- Includes an Intel Windows® XP based PC with 80 GB hard drive
- 19" rack mount to fit standard 19" PC equipment racks (rails included)
- Compatible with a variety of SOKKIA GPS antennas
- Built-in ethernet port for easy connectivity

Software Features

- Provides data access 24 hours a day, 7 days a week.
- Accessible from any computer with an available Internet browser.
- Create custom data collection sessions and log several sessions simultaneously.
- Create customized files — name, duration, epoch interval, sessions (time and length), elevation mask.
- Log data in native or RINEX format.
- Control receiver remotely through an Internet connection.
- Compatible with SOKKIA's GSR2600, GSR2650 LB, GSR2700 RS and GSR2700 IS receivers.
- Graphical plots of current and past satellite information (number, DOP, etc.).
- Customize user accounts to limit accessibility.
- User-defined site configuration.
- Remote upload of receiver firmware.
- Send files automatically to FTP server.
- User-defined automatic clean up of data files.
- Run on Microsoft® Windows® XP Professional for optimal performance.



System includes the GSR2700 RS with GSR Reference Station Software pre-installed!

Or purchase the GSR Reference Station Software to use with your existing SOKKIA GPS equipment.

GSR2700 RS Specifications

Position Accuracy		
Static ¹	3.0 mm + 0.5 ppm (horizontal); 10.0 mm + 1 ppm (vertical)	
Channels		
	12 x L1 and 12 x L2 with full code and carrier	
Time to First Fix		
Cold Start	50 sec (typical)	
Signal Reacquisition	0.5 sec L1 and 1.0 sec L2 (typical)	
Data Rates ²	20 Hz	
Physical		
Weight	11.1 kg / 14.7 kg with rack rails	24.5 lbs / 32.3 lbs with rack rails
Dimensions (h x w x d)	4.5 cm x 43.0 cm x 60.9 cm	1.8 in x 16.9 in x 23.9 in
Environmental		
Operating Temperature ³	+5° C to +35° C	+41° F to +95° F
Storage Temperature	-40° C to +70° C	-40° F to +158° F
Humidity	95% non-condensing at +30° C (non-operating); 95% non-condensing at +86° F (non-operating)	
Power		
Supply	110–220 V AC Power (nominal)	
Consumption	GPS card and carrier board 1.95W (typical) Rated for 350 watts of power at the following voltages: • 100-127 V at 50/60 Hz; 5.67 A maximum • 200-240 V at 50/60 Hz; 2.89 A maximum	
Ports		
Computer	1 x Power, 1 x RS232, 3 x USB, 2 x Ethernet (10/100 MB and 1 GB LAN), 1 x parallel, 1 x VGA	
GPS	1 x Antenna, 1 x RS232, 1 x External Oscillator (SMA)	

GSR Reference Station Software Minimum System Requirements

Operating System	Microsoft® Windows® XP Professional (Recommended for optimal performance)
Processor	Minimum: Pentium® class 233 MHz or better. Recommended: Pentium® class 1.5 GHz or better.
Memory	Minimum: 128 MB RAM with 20 GB free disk space, plus extra available for collected data storage. Recommended: 256 MB RAM with 100 GB free disk space.
Display	Super VGA monitor
Drives	CD or DVD drive
Input	Microsoft® Windows® compatible keyboard and mouse
Ports	One serial port
Browser	Microsoft® Internet Explorer 5.0 or higher, Netscape® 7.0 or higher, or Firefox 1.0
Network	Ethernet card

1. Accuracy depends on the number of satellites used, obstructions, satellite geometry (DOP), occupation time, multipath effects, atmospheric conditions, baseline length, survey procedures and data quality.

2. Maximum data rate is dependent on number of active sessions and data being collected.

3. Maximum rate of change not to exceed 10° C (50° F) per hour.

Design and specifications are subject to change without notice.

Sokkia GPS Worldwide

www.sokkia.com

SOUTH KOREA
+82-2-514-0491
www.sokkia.co.kr

CANADA
+1-905-238-5810
www.sokkiacanada.com

LATIN AMERICA
+1-305-599-4701
www.sokkialatinamerica.com

CHINA
+86-21-63541844
www.sokkia.com.cn

NORTH AMERICA
+1-913-928-2787
www.sokkia.com

EUROPE
+31-36-5322880
www.sokkia.net

OCEANIA
+61-2-4925-7730
pointaustralia@bigpond.com

JAPAN
+81-46-248-7984
www.sokkia.co.jp

SINGAPORE
+65-6479-3966
www.sokkia.com.sg

Dealer Information



790-0-0068
Printed in the U.S.A

POINT, Inc. — Integrated Measurement Solutions
©2005 POINT, Inc. SOKKIA is a trademark of SOKKIA Co. Ltd. All rights reserved.
All other trademarks are the property of their respective owners.