



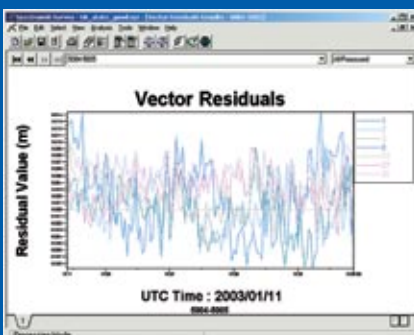
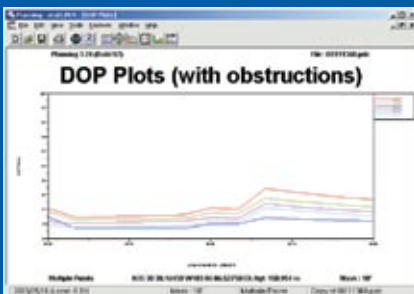
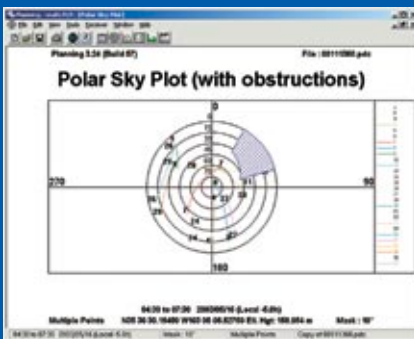
# Spectrum® Survey Suite

Post-Processing, Adjustment and  
Planning Software

SOKKIA's Spectrum Survey is a comprehensive, easy-to-use, Windows® based software package that supports all phases of GPS survey operations. Spectrum Survey Suite combines Spectrum Survey and Planning into one software package. This package provides all of the tools you need to successfully manage your project, from planning to processing, adjusting and analyzing GPS survey data.



## Spectrum Survey Features



- Process single and dual-frequency GPS data (code and carrier).
- An integrated GPS data processing and network adjustment environment makes it easy to process and adjust data in a few simple steps.
- Display data in geographic, state plane, UTM or user-defined coordinates. Compute and export data in ground coordinates.
- View and edit baselines before processing, either through menus or through the graphical interface.
- Supports commonly used methods of survey data collection, including static, rapid-static, kinematic and stop-and-go.
- Compatible with SOKKIA's GSR2700 IS, GSR2600 and Stratus GPS receivers, along with other proprietary data formats, including RINEX.

# Spectrum® Survey Suite Specifications

<b>Spectrum Survey</b>	
Import Data	Direct download from receiver with easy import.
Graphic Display	View all points and vectors graphically and select/edit data through menus or graphical interface.
Streamlined Workflow	Simplified processes, such as the project creation wizard, and the ability to process and adjust data in one integrated product.
Flexible	Process several methods of data collection, including static and kinematic, simultaneously.
Adjustable Tools	Adjust and analyze data using several tools, including a loop closure utility and a redundant vector check.
Export Data	Export data to various formats, including SDR and ASCII.
<b>Planning</b>	
Mission Planning	Set up GPS receiver parameters in the office and know ahead of time how many satellites are visible at what time of day.
Detailed Geographic Information	Software is pre-configured with thousands of cities, detailed coastlines, and political and geographical boundaries.
Compatibility	Communicate with a wide range of SOKKIA GPS receivers, including the GSR2600, GSR2700 IS and Stratus.
<b>Minimum Specifications</b>	
Operating System	Windows® 95, 98, NT, 2000, ME and XP
Processor	Pentium class
Memory	16 MB RAM 46 MB hard disk space <sup>1</sup> (no geoids)
Ports	1 x Serial
Display	VGA Display
Drive	CD-ROM
Security	Software based
<b>Recommended Specifications</b>	
Operating System	Windows® 95, 98, NT, 2000, ME and XP
Processor	Pentium III 600 MHz Microprocessor
Memory	128 MB RAM 217 MB hard disk space <sup>1</sup> (geoids included)
Ports	1 x Serial
Display	SVGA Display (17 in. or larger)
Drive	CD-ROM
Security	Software based
1. Extra hard disk space is required for storage of product data. Design and specifications are subject to change without notice.	

## Sokkia GPS Worldwide

**CANADA**  
+1-905-238-5810  
www.sokkiacanada.com

**LATIN AMERICA**  
+1-305-599-4701  
www.sokkialatinamerica.com

**CHINA**  
+86-21-63541844  
www.sokkia.com.cn

**NORTH AMERICA**  
+1-913-928-2787  
www.sokkia.com

**EUROPE**  
+31-36-5322880  
www.sokkia.net

**OCEANIA**  
+61-2-4925-7730  
pointaustralia@bigpond.com

**JAPAN**  
+81-46-248-7984  
www.sokkia.co.jp

**SINGAPORE**  
+65-6479-3966  
www.sokkia.com.sg

**SOUTH KOREA**  
+82-2-514-0491  
www.sokkia.co.kr

**www.sokkia.com**

### Dealer Information



790-0-0020  
Printed in the U.S.A.

POINT, Inc. — Integrated Measurement Solutions  
©2005 POINT, Inc. SOKKIA is a trademark of SOKKIA Co. Ltd. All rights reserved.  
All other trademarks are the properties of their respective owners.